

PURLIN CLAMP

MALLEABLE IRON



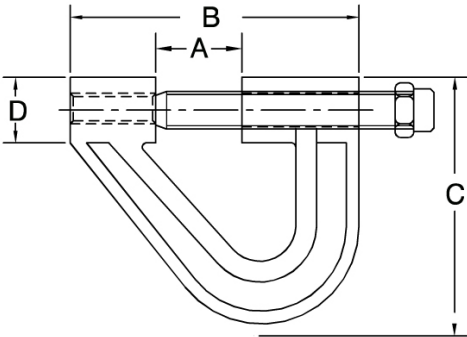
3/8" Rod Size

Finish: Plain (available Galvanized - special order)

Function: Structural attachment to lower beams or purlins with 45° flanges up to 2" long and 90° flanges up to 1-1/2" high

Features: Hardened steel set screw

Approvals: UL Listed, FM Approved



ITEM#	DESCRIPTION	A	B	C	D	MAX LOAD	MAX PIPE SIZE
2550067	3/8" PURLIN CLAMP	1"	3-1/8"	2-7/8"	1/4"	450 LBS.	4"

System No.		Location		Spec Section		Paragraph	
Submitted By		Date		Approved		Date	